

5 Dáil constituencies where change is recommended

5.1 Cork area

The population of the Cork area, at 519,032 is equivalent to an allocation of 18 seats in a 158 member Dáil. As Cork currently has an allocation of 19 seats a reduction of 1 seat in the area is necessary.

The Commission gave consideration to making significant changes to the Cork constituencies including reducing the number of constituencies from five to four, as was suggested in a number of submissions.

The Commission decided to recommend maintaining the existing constituency formation for the following reasons. The variances in the constituencies of Cork East (–1.55%) and Cork South-West (–4.78%) are acceptable to the Commission. Relatively small population transfers between the other three constituencies can improve the variances in the constituencies to an acceptable level. None of the adjoining constituencies in neighbouring counties needs to acquire population from, or to transfer population to, Cork.

In considering where the one seat reduction might be made the Commission had regard to the population changes in the area between 2006 and 2011. While all constituencies in the area show population increases, the highest was in Cork East (14.2%) compared to the lowest levels of increase in the Cork South-Central (4.5%) and Cork North-Central (4.7%) constituencies. These two constituencies also show the highest variances. The Commission therefore recommends the reduction of one seat in the Cork North-Central/Cork South-Central area.

In order to achieve this and to improve the parity of representation in the Cork constituencies the Commission's recommendations are as follows:

Cork North-West

Four electoral divisions, with a population of 5,048, should be transferred from Cork North-Central to Cork North-West. This reverses the transfer effected in 2009 (by the Electoral (Amendment) Act 2009) between these constituencies and retains Cork North-West as a 3-seat constituency.

Cork South-Central and Cork North-Central

Eleven electoral divisions and part of another, with a total population of 17,307, should be transferred from Cork South-Central to Cork North-Central. Cork South-Central should become a 4-seat constituency and Cork North-Central should remain a 4-seat constituency. The Commission recognises that this transfer breaches the natural boundary of the North Channel of the river Lee, which was an issue considered by previous Commissions. However, the Commission notes also that the electoral divisions to be transferred were in the Cork North-Central constituency at various times between 1980 and 2005 and that some were there for all of that period.

Details of the transfers are given in Appendix 3. The following table sets out the relevant statistics for the constituencies in Cork where change is recommended.

Recommended Constituency	Number of TDs	2011 Population	Population per TD	Variance from National Average Population per TD (29,040)	
				Number	%
Cork North-Central	4	117,170	29,293	+253	+0.87
Cork North-West	3	86,593	28,864	-176	-0.60
Cork South-Central	4	117,952	29,488	+448	+1.54

Cork East (4) and Cork South-West (3) provide the remaining seats in the area.

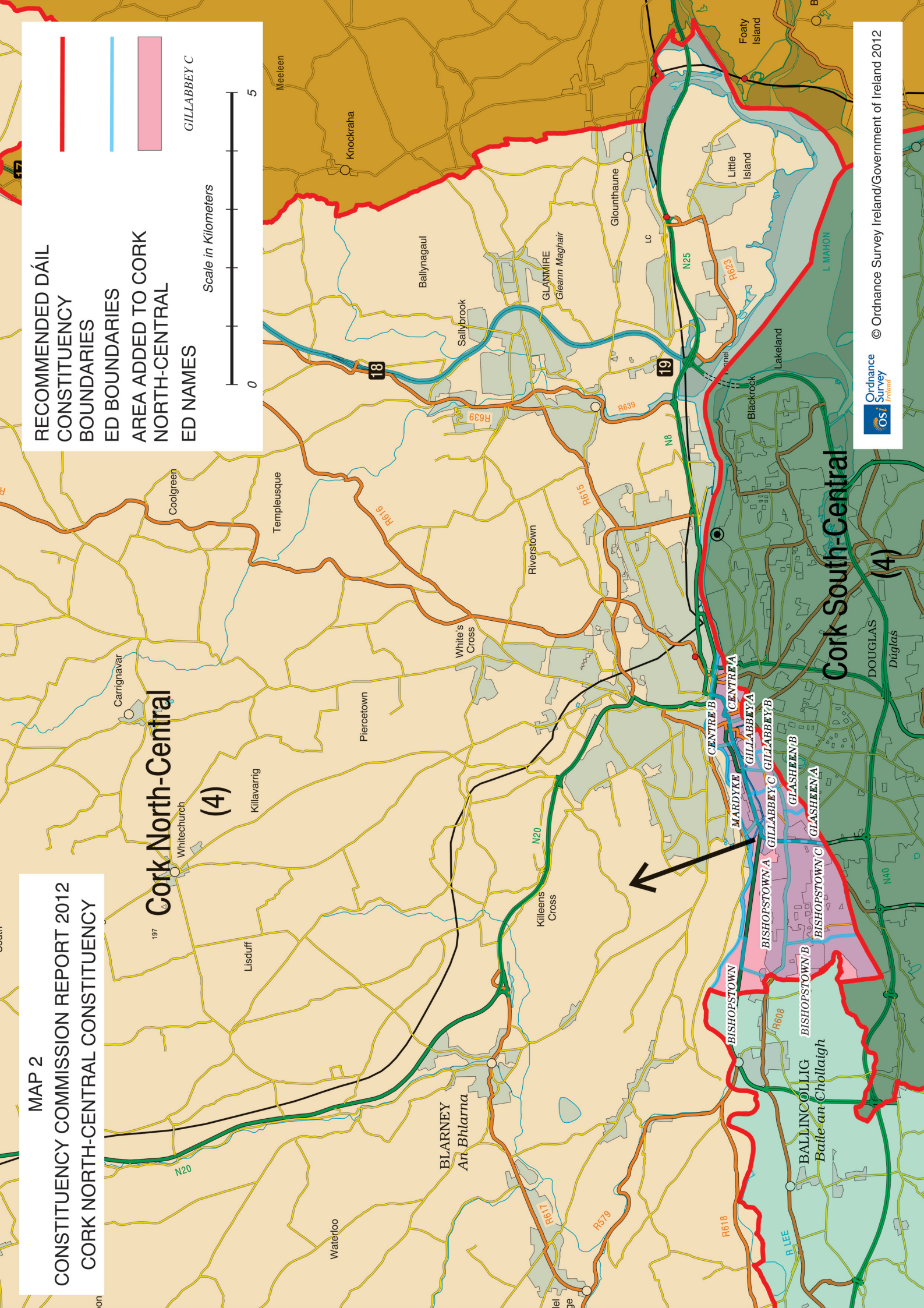
The relevant parts of the recommended Cork constituencies are shown on Maps 2 and 3 on pages 19 and 20.

MAP 2

4

A map of the Cork North-Central (4) constituency. The map shows the coastline of Cork, with Carrignavar and Whitechurch marked. The constituency boundary is indicated by a thick orange line. The map also shows the locations of Carrignavar, Whitechurch, and Killavaring. The number 197 is visible in the bottom left corner.

4



RECOMMENDED DÁIL
CONSTITUENCY
BOUNDARIES
ED BOUNDARIES
AREA ADDED TO COR
NORTH-CENTRAL
ED NAMES

Scale in Kilometers

GILLABBEY C

A vertical scale in kilometers. It is a horizontal line with tick marks. The left end is labeled '0' and the right end is labeled '5'. There are four intermediate tick marks, dividing the segment into five equal parts. The text 'Scale in Kilometers' is written vertically to the left of the line.

CONSTITUENCY COMMISSION REPORT 2012
CORK NORTH-WEST CONSTITUENCY

